

Data Security for *Professional Services*

Professional services organizations, including law firms, accounting and audit practices, management consultancies, and financial advisory firms, share a data security problem most tools were not built to solve. Client engagements generate sensitive files that move constantly: across matters, between teams, into AI tools, and out to external collaborators. A single misdirected document, unauthorized disclosure, or AI-related data leak can trigger a regulatory violation, an ethical complaint, or the end of a client relationship.

Cyberhaven gives professional services security teams the visibility and control over their data flows, without disrupting billable work.

72%

of clients are concerned about firms protecting their data when using generative AI

The Hidden Cost of Cyber Neglect, Integris IT 2025

82%

of generative AI tools used in professional services carry medium-to-critical risk

Cyberhaven 2026 AI Adoption and Risk Report: Professional Services

70%

of all data breaches involved data distributed across multiple environments

IBM Cost of a Data Breach Report 2025

How Cyberhaven Protects Professional Services



Protect Client Confidentiality and Enforce Ethical Walls

Professional services firms run multiple engagements simultaneously, often with teams sharing resources. Cyberhaven tracks data by lineage rather than content alone, detecting when files from one client are accessed or shared by someone outside the authorized team.



Secure AI Adoption Without Blocking Productivity

Attorneys, consultants, and accountants increasingly use AI to draft documents, summarize matters, and analyze data. Cyberhaven tracks what client-confidential data enters AI applications and coaches users toward approved workflows in real time.



Prevent Data Loss When Professionals Change Firms

When staff prepare to leave, they often begin staging data before their departure. Cyberhaven detects abnormal access patterns, bulk downloads, and transfers to personal cloud storage so security teams can investigate and respond before sensitive client materials leave the organization.

The Data Lineage Difference

Cyberhaven's Data Lineage technology traces every piece of data from its origin, recording every copy, move, edit, and share across endpoints, SaaS tools, cloud storage, and agentic AI applications. That complete context makes classification accurate and investigations fast, without the manual overhead that makes legacy DLP a firm-wide maintenance burden.

Discover Unknown Data Flows

Without configuring policies in advance, Data Lineage reveals how client files, engagement documents, and confidential communications move across your environment.

Rich Context for Accurate Classification

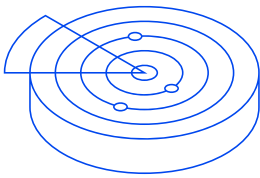
For every piece of data, lineage reveals where it originated, how it was handled, and who interacted with it.

Accelerate Investigations With Full Lineage

When incidents occur, Data Lineage surfaces the full sequence: what the data was, where it originated, who accessed it, and where it went.

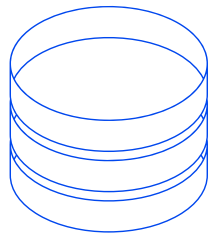
One Platform: DLP, DSPM, IRM, and AI Security

Cyberhaven delivers a unified platform so your security team maintains full context in a single console, with no tool-switching and no lost lineage between products. Surface actionable findings instead of raw alerts, and respond without disrupting client work.



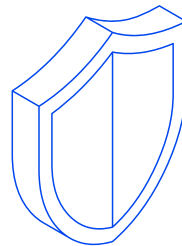
DLP

Data loss prevention (DLP) that stops exfiltration across email, web, cloud storage, and endpoints, with real-time user coaching to guide behavior before incidents occur.



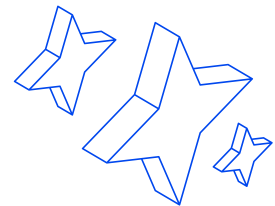
DSPM

Data security posture management (DSPM) that discovers and classifies sensitive data, then detects risk as it flows between clouds, SaaS tools, and devices.



IRM

Insider risk management (IRM) that combines data movement and behavior signals to surface slow-burning threats and separate accidental actions from deliberate exfiltration.



AI Security

AI Security that tracks what enters and exits AI tools, enforces policies on unapproved applications, and governs agentic AI workflows across your environment.

See What Is Happening to Your Data

Protect client data, enforce ethical walls, and secure AI adoption across your firm.

[Request a demo](#)

About Cyberhaven

Cyberhaven reimagines data security. AI-based classification combined with Data Lineage technology analyzes billions of data workflows to understand every piece of data within an organization, identify when it is at risk, and take action to protect it. To learn more, visit cyberhaven.com.